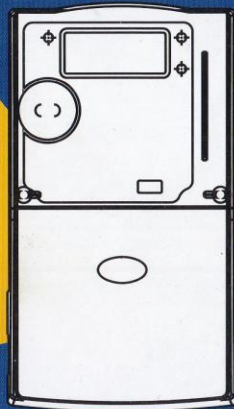


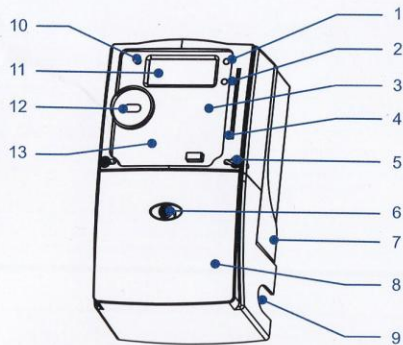
# Single Phase Smart Card Prepayment Meter User Manual



## Warning

Please do not open meter because there are no user serviceable parts inside the meter and under no circumstances should it be opened. Tampering of meter is forbidden and may cause load disconnection and may be punishable by law. Meter is designed that no need user maintenance. Should the meter need cleaning we recommend gently wiping the cover with a cloth lightly dampened with methanol.

## • Characteristics



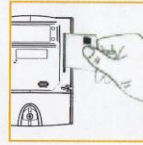
- |   |                                     |
|---|-------------------------------------|
| 1 Impulse Indicator                             | 10 Alarm Indicator                  |
| 2 Phase Voltage Indicator                       | 11 LCD                              |
| 3 Meter Cover                                   | 12 Infrared Communication Interface |
| 4 Card Slot                                     | 13 Meter Pannel                     |
| 5 Seals (one on each side)                      |                                     |
| 6 Terminal Cover Seal                           |                                     |
| 7 Meter Case                                    |                                     |
| 8 Terminal Cover<br>(Two types: Short and Long) |                                     |
| 9 Cable hole                                    |                                     |

## • Working Principle

On the right side(middle) of the meter, there is a IC slot,using for data conversion,or for metering,installing and removing anti-stealing sign.  
Pay attention to the direction of the IC card when inserting, and wait for a few seconds. After correct hints, IC card removal can be done.



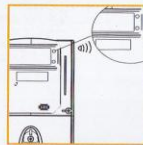
1.Open an account  
Each meter processes a card kept by users.New users can open an account with the information inserted into the card through a special vending system.Meter can be normal used after inserting the card



2.Purchasing electricity  
When the power is low,meter will give an alarm, which means that users should bring the cards and purchase electricity.The amount of electricity will be written into the card through vending system.



3.User insert the IC card into the meter in the direction of arrows, once "DI" to be heard, the electricity has been installed.  
After completion of loading electric operation,the LCD will show the following information: Card\_OK



## • LCD Instruction



## • Display Mode

After meter is powered on, it will enter into self-checking status automatically. After LCD full screen display lasts 2 seconds, meter will be in auto scroll display mode.

Manual scroll display mode SET-I, SET-II and SET-III switch with blue button via holding 2 second.

Code Number	Description
00	Remaining Credit
01	Billing Period Energy
02	Total Energy

### Special Display Code

Token Result Code	Description
Err_01	Sequence Number Error
Err_02	Token type Error
Err_04	Token Data Error/Card Data used
USED	Token Used
Full	Over Credit
ACCEPT	Token Accepted
PLS_2nd	Please Input the next token
Card_Ok	Card Accepted
CardErr0	Card Address unmatched
CardErr1	Card Password verify Error
CardErr2	Card Read write Error
CardErr3	Card Token Error
CardErr4	Card Used
rEAding	Card reading

Meter Failure Code	Description
EEP_Er	Meter Failure

User Code	Description
Fri_Hour	Using Friendly hour
EG_CrEdi	Using Emergency Credit
temper	Tempering
Lo_CrEdi	Low Credit level
no_CrEdi	No Credit
BYPASS	Bypass
OVERLoAd	Overload
Cur-rEv	Current Reverse

### SHENZHEN INHEMETER Co., Ltd.

#### Headquarters

Add: 8/F & 9/F, 1A, Software Park, Southern  
Hi-Tech Zone, Nanshan District, Shenzhen,  
China  
P.C: 518054  
Tel: +86-755-26616686  
Fax: +86-755-26616689

#### Inhe Industry Park

Add: Inhe Industry Park, Yongxiu,  
Jiangxi Province, China  
P.C: 330300  
Tel: +86-792-3187666  
Fax: +86-792-3187555