



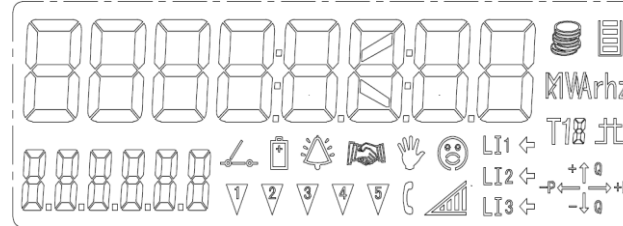
aMeter100

Single Phase Smart Energy Meter

Installation Guide & User Manual

Meter LCD Display

LCD Full Screen Display:



Display Icons including:

Symbol on LCD	Description
	Main display area
	Indicate the user code
	Currency indicator.
	Credit remains status indicator.
	Unit indicator
	Tariff indicator
	If meter in factory mode, this icon will be lighted.
	Energy direction indicator which indicates total power direction refreshed per second.

	Current state indicator. If there is load, the "LI1"/"LI2"/"LI3" will be lighted. And if current is reverse, the arrow will be light, and the icons will flash.
	Wireless signal level
	Token accepted or refused indicator.
	Meter is communicating
	Tamp indicator.
	The first inverted triangle indicates Key mode; The second one indicates test mode; The third one indicates DST enabled; The fourth one indicates over load; The fifth one indicates over current.
	Friendly status indicator
	Alarm status indicator.
	This Symbol is visible if the battery is low or disconnected
	Relay status

Auto display List

Index	Item name
1	LCD All Segment Display
2	Local Date
3	Local Time
4	Meter Number
5	Remaining Credit Value
6	Last Recharge Amount
7	Current Active Rate
8	Cumulative Active Energy
9	Last Month MD
10	Instantaneous Voltage
11	Instantaneous Phase Current
12	Instantaneous Neutral Current
13	Instantaneous Active Power
14	Instantaneous Power Factor

Push display List

Index	Item name
1	LCD All Segment Display-value
2	Local Date-value
3	Local Time-value
4	Device ID 1, manufacturing number-value
5	Remaining credit-value
6	Currently active tariff rate-value
7	Last purchase credit-value
8	Last purchase date-value
9	Last purchase time-value
10	Seq num-value
11	Open module cover count- date and Time value
12	Open terminal cover count- date and Time value
13	Active energy (+A+ -A) Combined total-value
14	This month consumption active energy (+A+ -A) Combined total-value
15	Last single month consumption active energy (+A+ -A) Combined total-value
16	Instantaneous voltage L1-value
17	Instantaneous current L1-value
18	Instantaneous current Neutral (LO)-value
19	Instantaneous active power (+A+ -A)-value
20	Instantaneous Power factor (+A/+VA)-value
21	Total Active MD Last Month-value
22	capture time
23	Current Max MD-value
24	capture time
25	Reactive energy import (+R+ -R)-value
26	Reactive energy Lag Inductive (Q1+Q3)-value
27	Reactive energy Lead Capacitive (Q2+Q4)-value

All kind of meter events will show in auto display mode cycle as an event name Error only cycle display when it happened. If any errors appeared, please contact with the engineer of local electric power department.

Short code display

Input the 3 digits combination code, then press “↵” keyboard will start the meter short code display.

Operation	Description
“00” + “↵”	Active emergency overdraft
“800” + “↵”	Cumulative total energy consumption, unit: kWh
“801” + “↵”	Remaining credit, unit: kWh (\$)
“806” + “↵”	Trip status word
“808” + “↵”	Active power, unit: kW
“814” + “↵”	Current monthly total energy consumption
“865” + “↵”	good/reject, succeed/fail to enter run mode
“869” + “↵”	Current power limit, unit: kW
“877” + “↵”	A Active power, unit: KW
“886” + “↵”	Current tariff price
“889” + “↵”	Seq No
“922” + “↵”	Monthly consumption amount
“953” + “↵”	Neutral Current
“981” + “↵”	Emergency balance
“998” + “↵”	Average power factor of current month

Alarm Information

Alarm information	LCD prompt
remaining less than 0	noCrEdit
Below the alarm threshold 1	LEvEL-1
Below the alarm threshold 2	LEvEL-2
Below the alarm threshold 3	LEvEL-3
Open state (end cover, top cover)	oP-CovEr
Power/Current Overrun	LiMitEr
manual trip	MAnuAL
battery undervoltage	E-bAttEr
Strong external magnetic interference	oP-Sn
current reverse	E-rEvErS
current imbalance	unbALn-I
overvoltage condition	ovEr-v
undervoltage state	undEr-v
Neutral fault	droP-n
forced trip status	F-oPEn
non-running trip	no-run
abnormal frequency	FrEq-Err
open box	OPEn-boX

Meter Installation Instruction

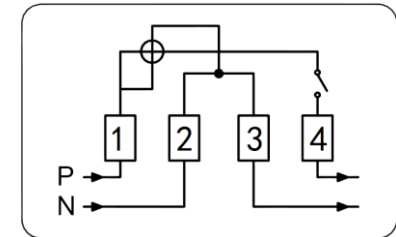
STEP1: Position the meter in required location.

Use mounting screws to mount the meter.

STEP2: Connect the electricity cable from the meter terminals and we are proposal to use 6mm -10 mm

Copper wire for single phase meter.

STEP3: Connect drawing for single phase meter:



STEP4: Install the terminal cover and sealed

Note:

Please don't open meter without permission lead to injury accident. The meter should be installed in the ventilation dry. The working environment should be lightning protection.